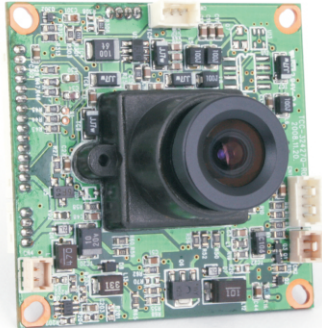


# MODULE CAMERA

## TCC-32427Q MODULE CAMERA



### - FEATURES -

- 1/3" SONY High-Resolution Super HAD CCD
- 540TV Lines Horizontal Resolution
- Excellent Low Light Sensitivity of 0.3Lux/F1.2 (B/W 0.01Lux/F1.2)
- Auto Day & Night
- 42 x 42mm Size One Board Camera

### Option

- OSD Control Board
- Audio



1/3 SONY SUPER HAD CCD



COLOR



DAY & NIGHT



FLICKER-LESS



BOARD LENS

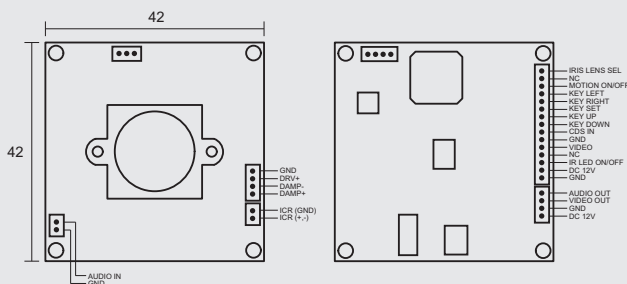


VARIFOCAL LENS

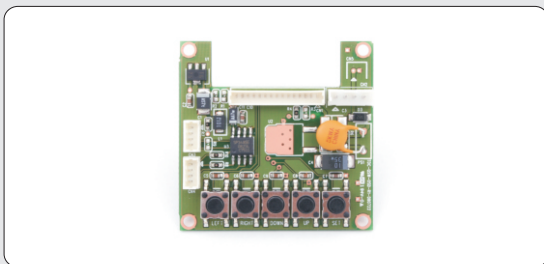


DC 12V

### - DIMENSION -



### - OSD CONTROL BOARD -



### - VARIFOCAL LENS TYPE -



### - SPECIFICATIONS -

TCC-32427Q		
Signal Format	NTSC	PAL
Horizontal Resolution	540TV Lines	
Image Sensor	1/3" SONY High-Resolution Super HAD CCD	
Effective Pixels	768(H) x 494(V)	752(H) x 582(V)
Scanning System	2:1 Interlace	
Synchronization	Internal	
Scanning Frequency	15.734 KHz(H), 59.94 Hz(V)	15.625 KHz(H), 50.00 Hz(V)
Video Output	CVBS : 1.0Vp-p/75Ω	
Min. Illumination	Color : 0.3Lux/F1.2, B/W : 0.01Lux/F1.2	
Electronic Shutter	FLK / FIXED / MANUAL / AUTO (1/60 ~ 1/100,000 sec)	FLK / FIXED / MANUAL / AUTO (1/60 ~ 1/100,000 sec)
IRIS Control	DC / MANUAL	
Signal to Noise Ratio	50dB (AGC Off)	
Backlight Compensation	ON / OFF	
White Balance	ATW / AWB / FIXED / MANUAL	
Gain Control	ON / OFF	
Day & Night	COLOR / BLACK & WHITE / AUTO	
Gamma	Adjustable	
Flickerless	ON / OFF	
Motion Detection	ON / OFF	
Privacy	ON / OFF	
Mirror	ON / OFF	
Sharpness	ON / OFF (Level Adjustable)	
OSD	Built-in (Chinese, English, Japanese, Korean)	
Lens	Board Lens : f=2.5 / 6.0 / 8.0mm DC Varifocal Lens : f=2.8~11.0 / 4.0~9.0mm	
Input Voltage	DC 12V (±10%)	
Power Consumption	Max. 2.0W	
Operating Temp/Hum	Temperature : -10°C to +50°C / Humidity : 20% to 80% RH	
Storage Temp/Hum	Temperature : -20°C to +60°C / Humidity : 20% to 90% RH	
Dimension	42.0(W) x 42.0(H) x 1.0(T)mm	
Weight	Approx. 12g	
Option	Audio	