

SQUARE CAMERA

TSC-34Q Series COLOR SQUARE CAMERA



DC Varifocal Lens Type
TSC-34QDV

- FEATURES -

- 1/3" SONY DSP Super HAD CCD
- 550TV Lines
- 37x37mm Size Miniature Camera
- Min. Illumination : 0.3Lux/F2.0
- Automatic Gain Control
- Electronic Shutter
- Reverse Polarity Power Input Safety Circuit
- Camera Type
 - Board Lens type
 - Pinhole Lens type
 - DC Varifocal Lens type : 2.8~11.0mm
 - Weatherproof type



1/3 SONY DSP
Super HAD CCD



COLOR



2.8-11.0mm
Varifocal Lens



Weatherproof



Auto / IRIS



Electronic shutter



DC 12V

- LENS OPTION -



Weatherproof Type
TSC-34QW



Board Lens
TSC-34QB

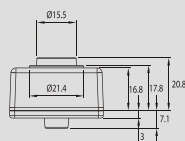
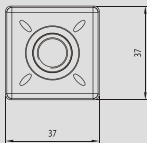


Semi Pinhole Lens
TSC-34QSP

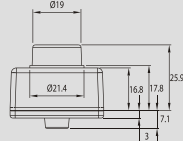


Conical Pinhole Lens
TSC-34QCP

- DIMENSION -



Pinhole Lens type



Board / Weatherproof /
DC Varifocal Lens type

- SPECIFICATION -

TSC-34Q		
Signal Format	NTSC	PAL
Horizontal Resolution	550TV Lines	
Image Sensor	1/3" SONY DSP Super HAD CCD	
Scanning System	525 lines interlaced	625 lines interlaced
Synchronization	Internal	
Video Output	Standard composite 1Vp-p composite video into 75Ω	
Min. Illumination	0.3Lux	
Signal to Noise Ratio	45dB or more (AGC Off)	
Gamma	0.45	
AGC	On	
Lens Option	Board Lens, Pinhole Lens DC Varifocal Lens 2.8~11.0mm	
Input Voltage	DC 12V (±10%) / 150mA	
Operating Temperature	-10°C to +55°C	
Operating Humidity	Under 85% Non-condensing	
Dimension	37(W) x 37(H)mm	
Weight	60g	